

The background features abstract, overlapping green geometric shapes in various shades of green, creating a modern, layered effect. The shapes are primarily triangular and polygonal, with some having a fine, woven texture.

# King Ranch: Our History and Path to Pine Island

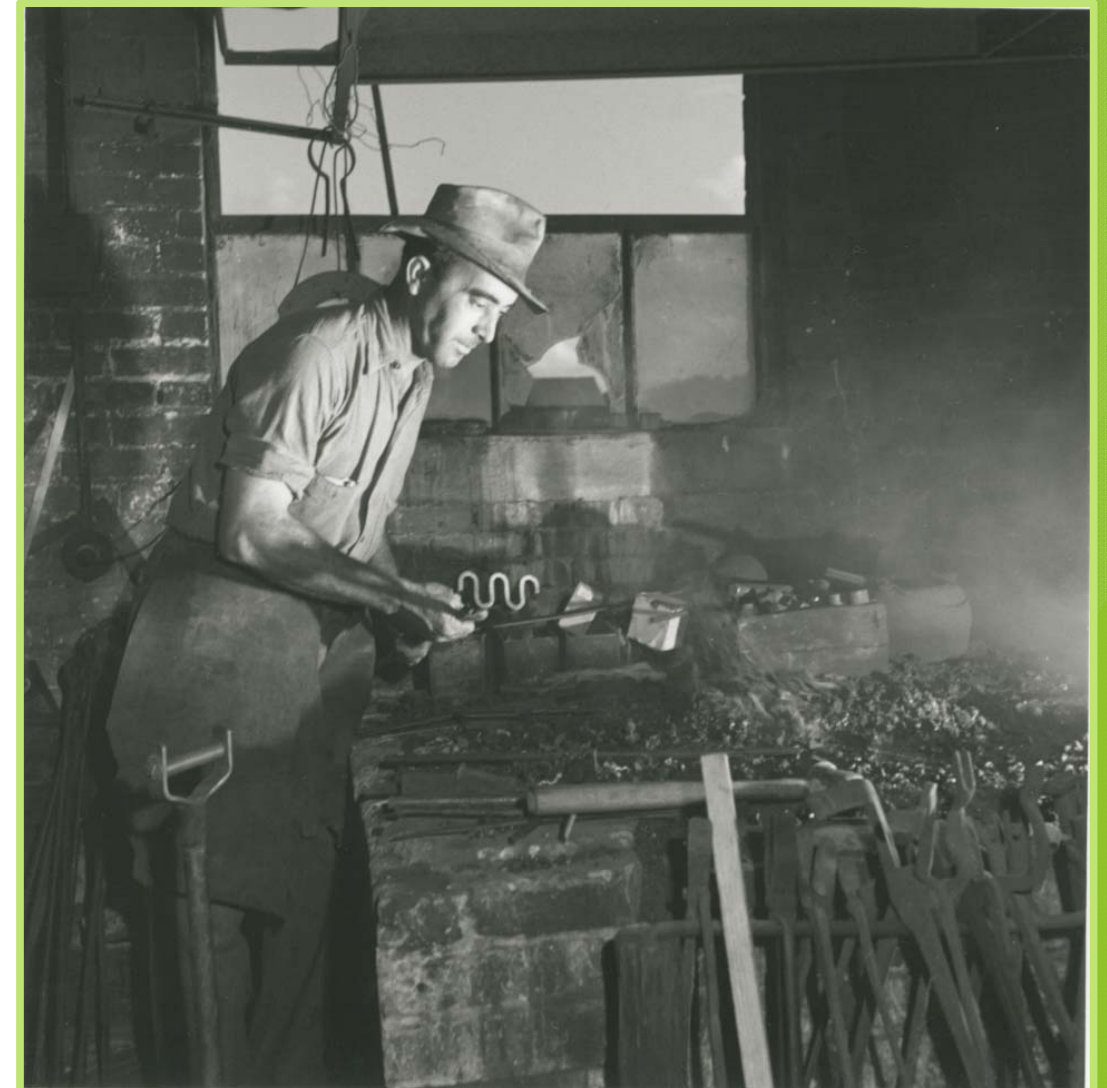
A Presentation to the Greater Pine Island Civic Association

June 4, 2019



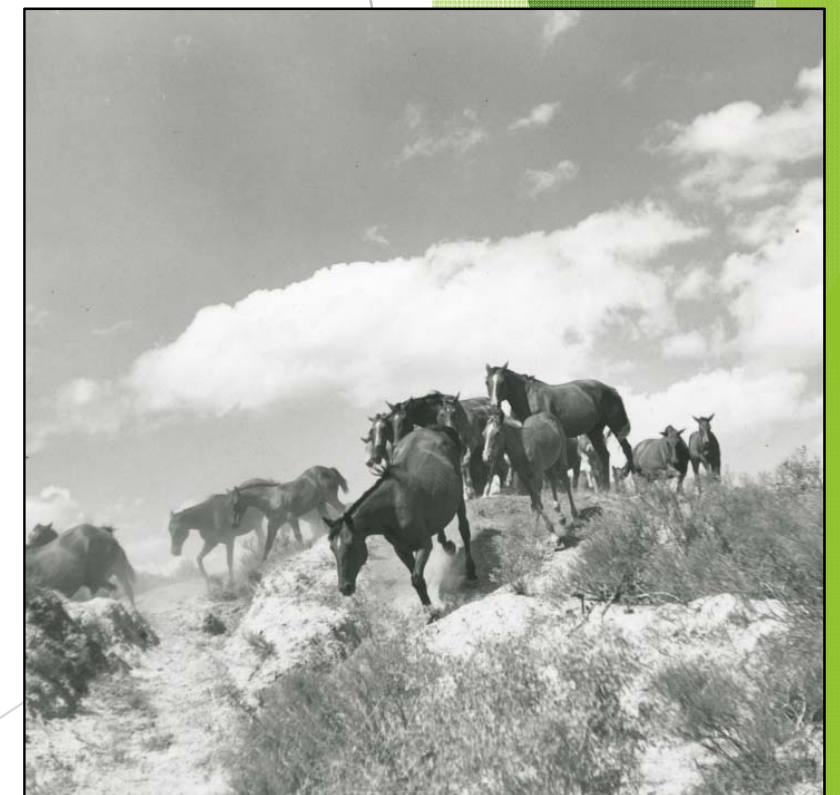
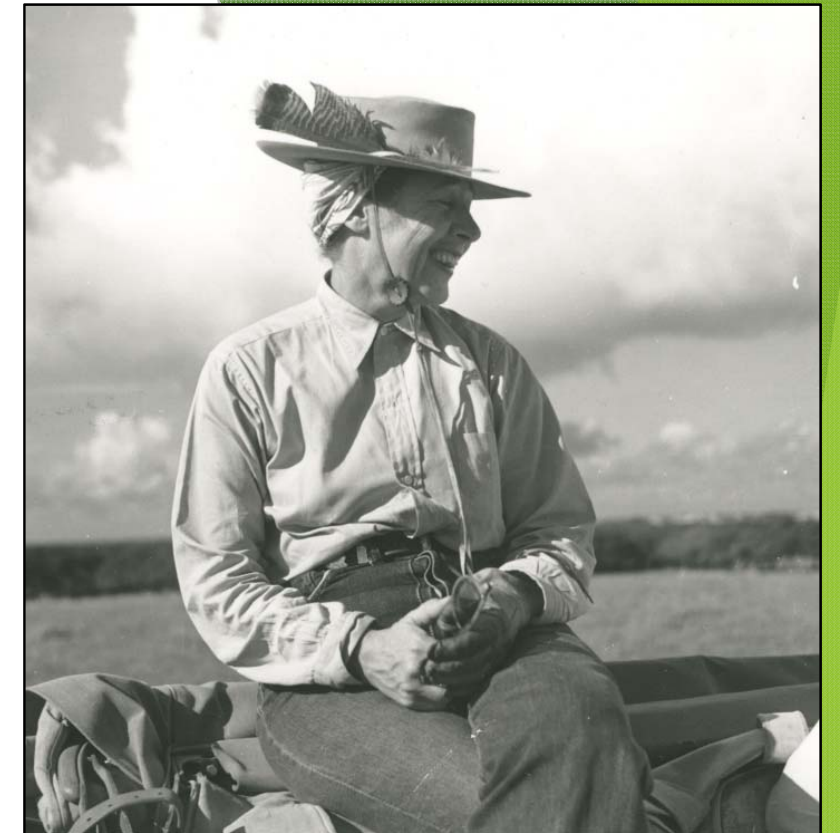
# King Ranch - Overview:

- Founded in 1853
- Still Family Owned
- Diversified Company
- Operations in Texas, Florida and California
- Known for agricultural innovation and land stewardship
- Very Legacy Minded





# King-Ranch.com



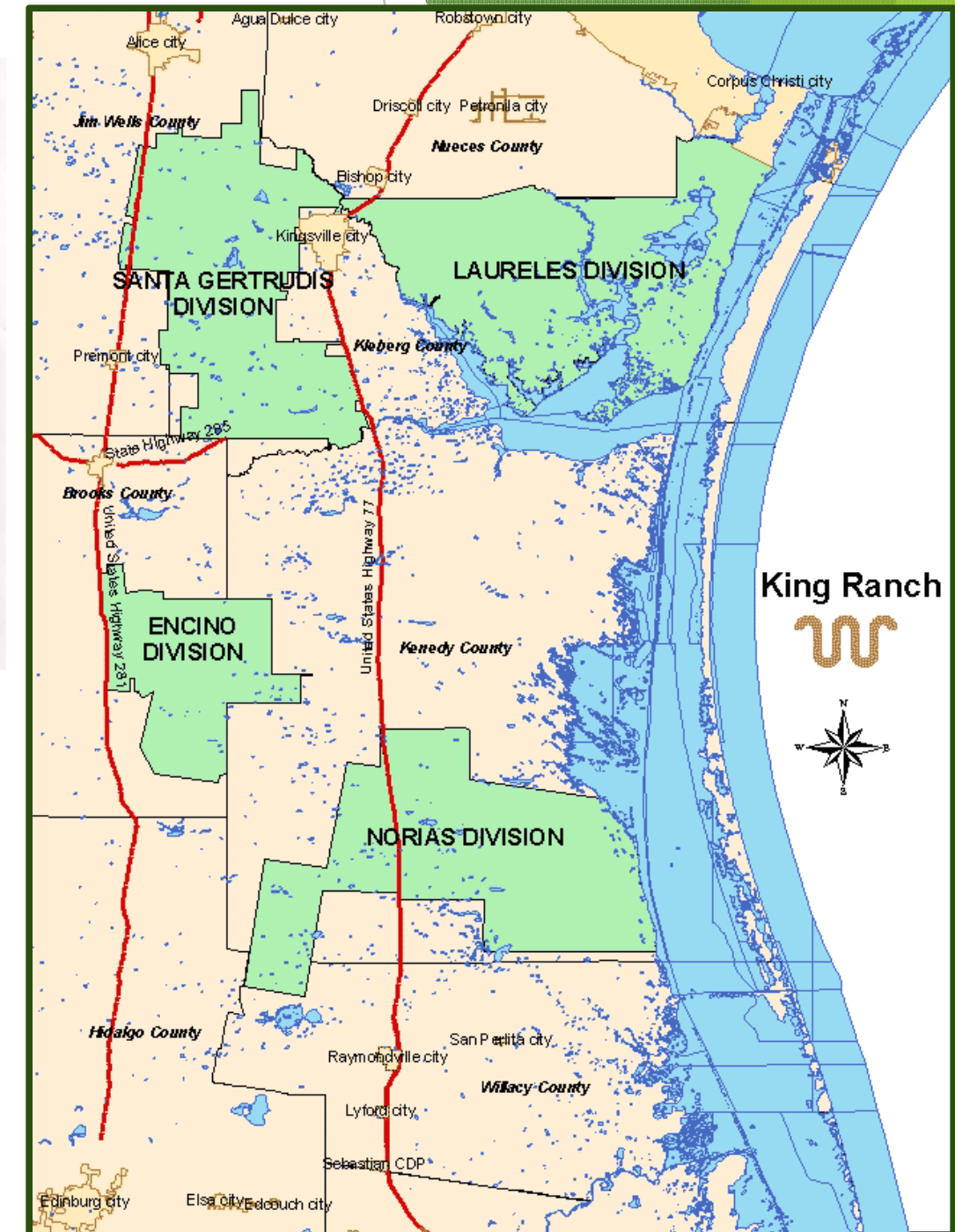
June 4, 2019



# King Ranch - Historical Context:

## Interesting Facts:

- Home to 35,000 cattle and 200 Quarter Horses
- Santa Gertrudis Bulls
- Triple Crown - *Assault*, 1946
- Almost repeated in '50 with *Middleground*
- 824,000 acres
- Leather and cotton craftsmanship
- In the top 10 largest private land ownerships in US





# King Ranch – Today:

## Interesting Facts:

- TX, FL and CA
- Cattle, Cotton, Citrus, Milo, Sugar Cane, Sod, Palm Trees, Almonds, Pistachios, Oil and Gas, Wildlife
- Caesar Kleberg Wildlife Research Institute
- King Ranch Institute on Ranch Management
- 2<sup>nd</sup> largest citrus producer in US
- Ford Trucks
- Retail Division





# King Ranch - Florida:

## Operations:

- Started in 1960's with Ranching
- Operations in 8 Counties in Florida
- All located south of I-4
- Just under 80,000 Ac.
- 17K - .28K (SEN)
- All Enrolled in BMPs
- Citrus Canker/Greening
- Hurricane Irma
- Alternative Crops

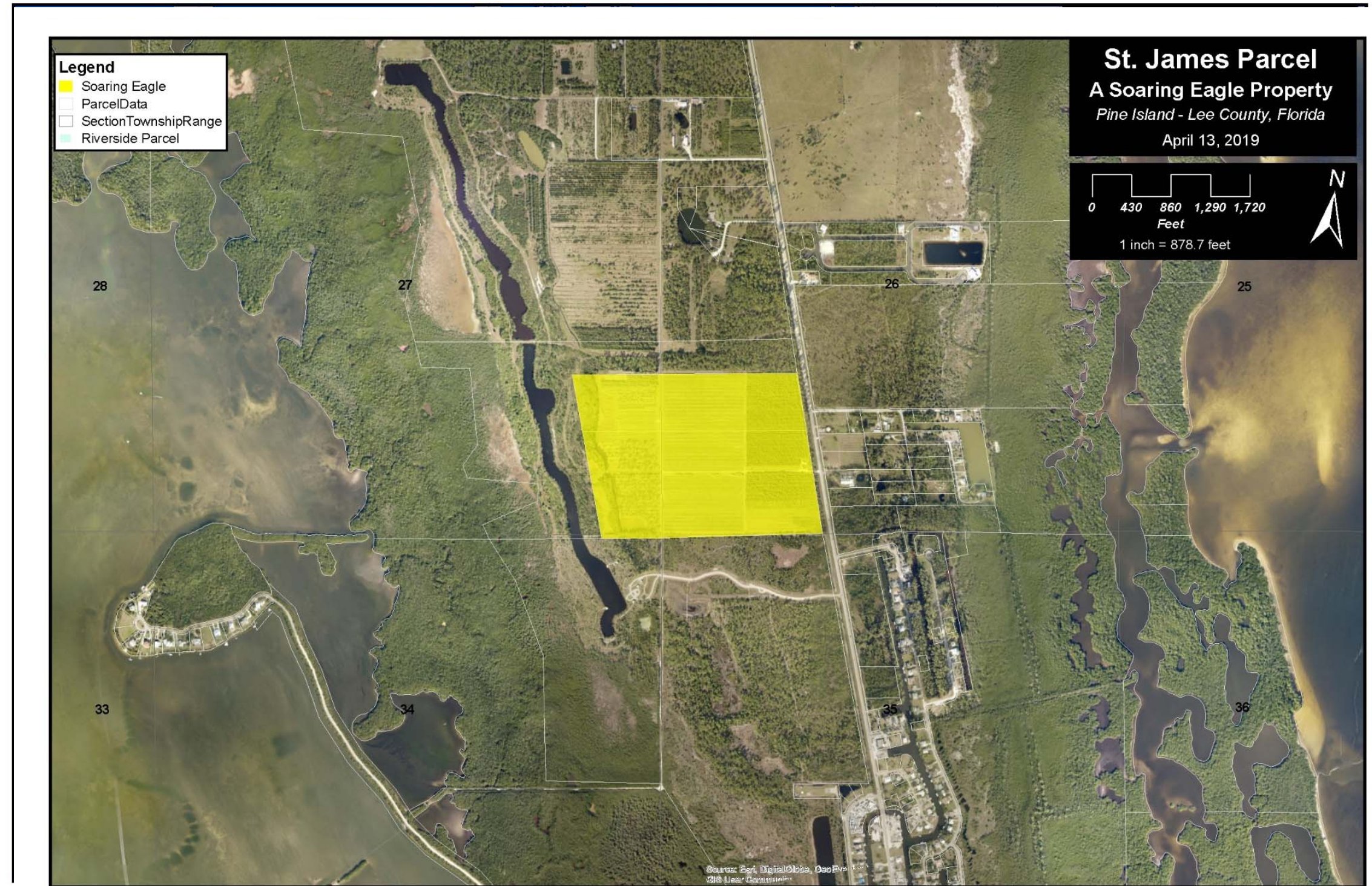




# King Ranch – Pine Island:

## Overview:

- Soaring Eagle - 2012
- Riverside Parcel - 2013
- Farm Credit - 2014
- Property Remains in Active Agricultural Use
- Have actually invested in enhancing the palm tree operation





# Soaring Eagle Nursery:

## *Representative Inventory*





# Soaring Eagle Nursery: *Representative Inventory*





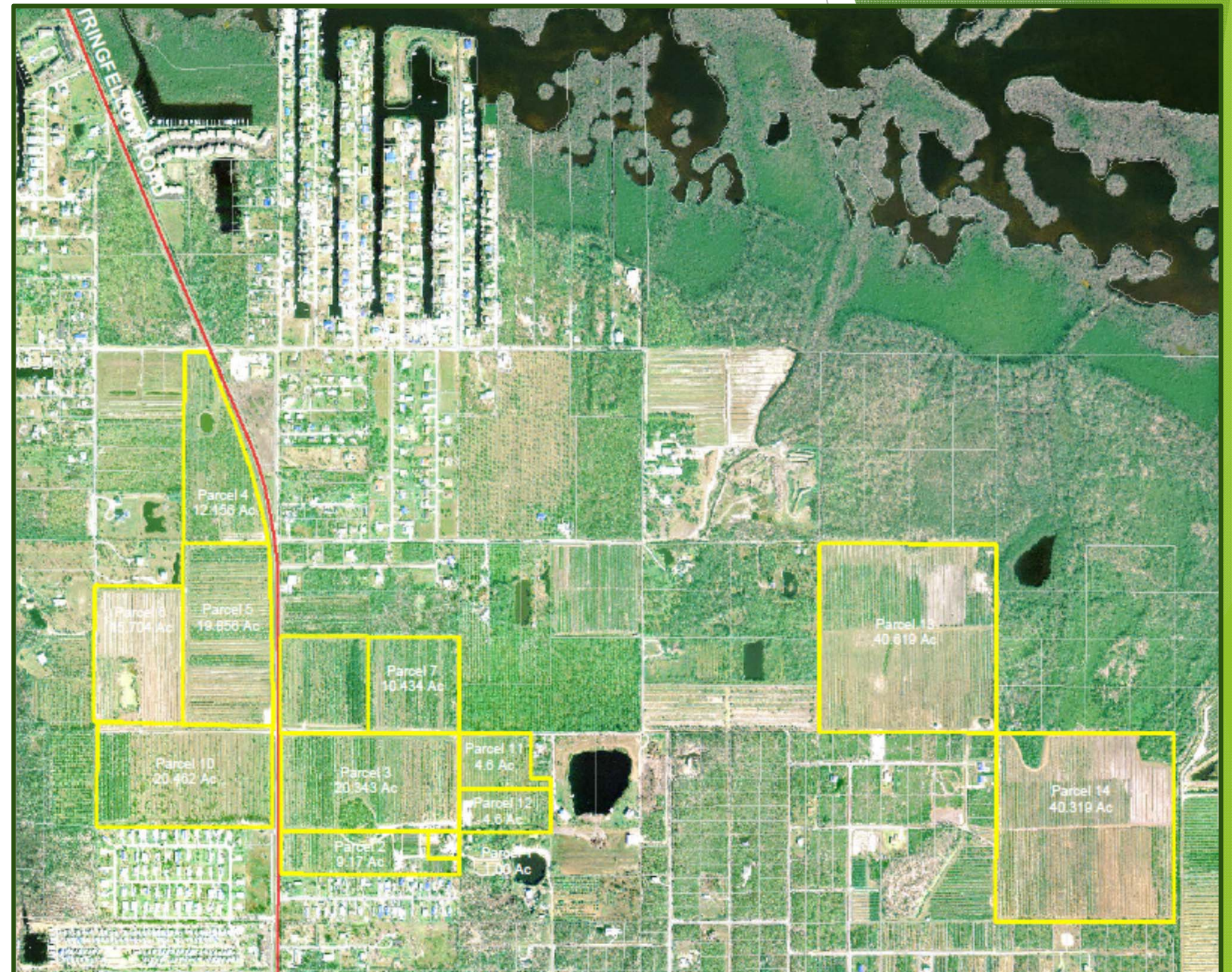
# Soaring Eagle Nursery: *Representative Inventory*





# King Ranch – Just the Facts:

- Conducted Due Diligence
- Have not submitted for any development permits
- Don't oppose Pine Island "vision", just the disproportionate Implementation
- Worked with County on equity
- Surprised by misinformation advanced by some/rumor mill
- Could have been an ally
- Pine Island Plan Concerns:
  - Large Land Owner impacts
  - Loss of Property Rights
  - Not opposed to "Character"

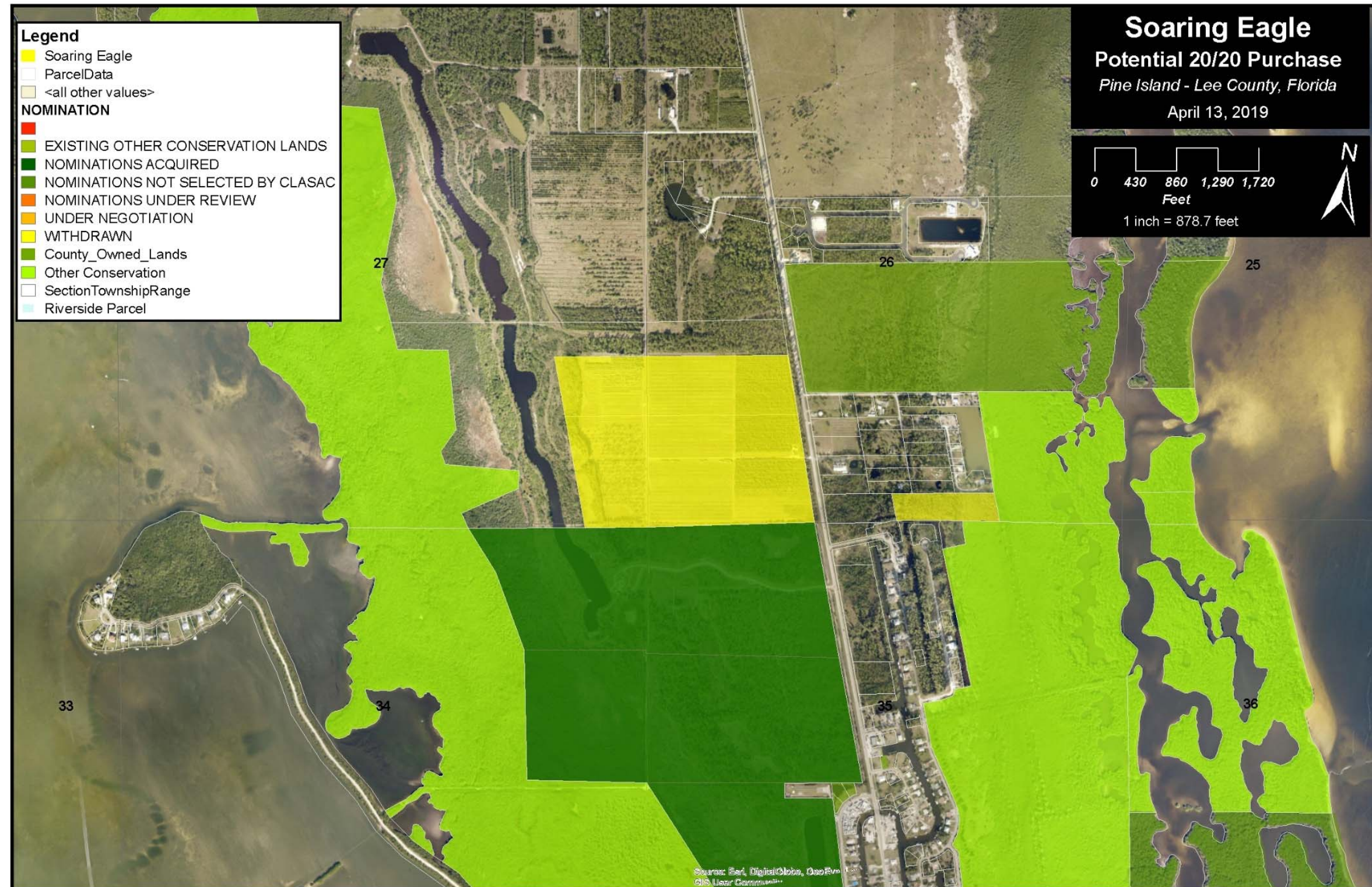




# King Ranch – Looking Forward:

## Opportunities:

- Continue Palm Operation
- Look for Efficiencies in near term
- Consider 2020 Option
  - County Regulations
  - Significant Opportunity
  - **Community Assistance could be critical**
- If necessary, will continue defending property rights





# King Ranch: Questions?

A Presentation to the Greater Pine Island Civic Association

June 4, 2019

Mitch Hutchcraft

[mhutchcraft@cclpcitrus.com](mailto:mhutchcraft@cclpcitrus.com)

239-210-9040